

Residential Gas Meter G2,5

Exact measurement and security



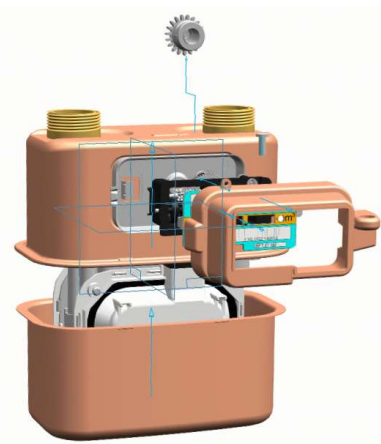
Overview

The gas meter G2,5 is designed for measurement of gas supplied to apartments where maximum consumption of gas is equivalent to 4 m³/h of air of density of 1,2 kg/m³ and the ambient temperature remains between -25°C and +55°C.

The gas meters can be used for measurement of:

- Natural gas
- City gas
- Propane-butane gas

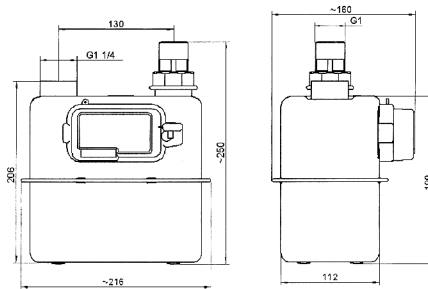
Gas meter can be equipped with pulse generator (1 imp = 0,01 m³) and then the gas meter is marked G2,5N.



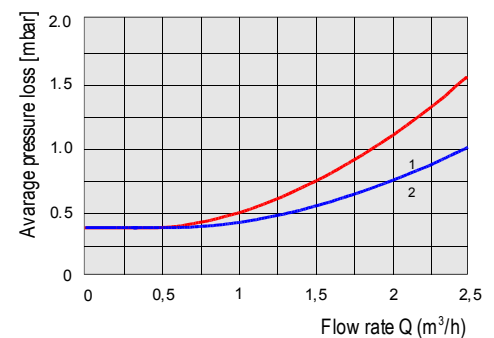
Technical Data

Maximum flow rate:	4 m ³ /h
Minimum flow rate:	0,025 m ³ /h
Nominal flow rate:	2,5 m ³ /h
Cyclic volume:	0,8 dm ³
Maximum working pressure:	0,5 bar
Index max. indication	99999,999m ³
Starting flow rate:	3 dm ³ /h
Weight:	2 kg
Fireproof up to 650 °C according to EN1359	up to 0,1 bar

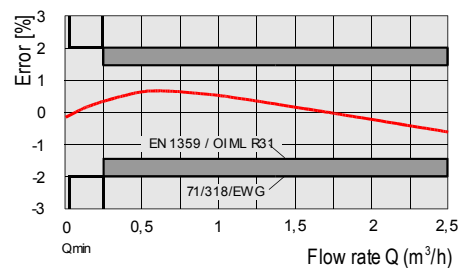
Dimensions



Pressure loss curves



Typical error curves



- 1 – air
2 – natural gas

METRIX SA • Piaskowa 3 • 83-110 Tczew, Poland
tel. +48-58-53 09 200 • fax. +48-58-53 09 300
<http://www.metrix.pl> • e-mail: metrix@metrix.pl

metrix