

# IZAR CENTER

## M-Bus and radio meter reading units

Izar Center unit is used for the remote reading of M-Bus and IZAR radio-linked meters. Easy to install, Izar Center automatically interrogates the meters to which it is connected and memorises their data (i.e. index, flowrate, power, temperatures etc.). Izar Center may be read either by a PC with an RS232, USB or LAN link or by an analog or GSM modem.

Connected to a GSM modem, Izar Center sends the data to an FTP server, at programmable intervals. Furthermore, it is able to warn the user in real time of the occurrence of alarms (i.e. for overconsumption, underconsumption, exceeded thresholds etc.) by e-mail or SMS. It can also run M-Bus control devices such as valves, relays etc.

Used as a repeater, Izar Center enlarges the network. It is available in different versions, to adapt to the network's size.



# Main technical specifications

## TECHNICAL SPECIFICATIONS

Memory	512 Mo (around 500,000 values)
Real clock	Date and time
Automatic meter reading	Programmable, from once a minute to twice a month
Alarm management	Notification by e-mail / SMS
Transmission to FTP server	Programmable from 1 hour to 1 month
M-Bus	300 to 9,600 bauds
IZAR-Center 60 capacity	Up to 60 meters or 3 M-Bus Receivers
IZAR-Center 120 capacity	Up to 120 meters or 6 M-Bus Receivers
IZAR-Center 250 capacity	Up to 250 meters or 12 M-Bus Receivers

## COMMUNICATION INTERFACE

RS232	PC, analog or GSM modem
USB	Standard port
LAN Ethernet	RJ45 port
M-Bus input	3 x 2 connector cables
Repeater output	1 x 2 connector cables

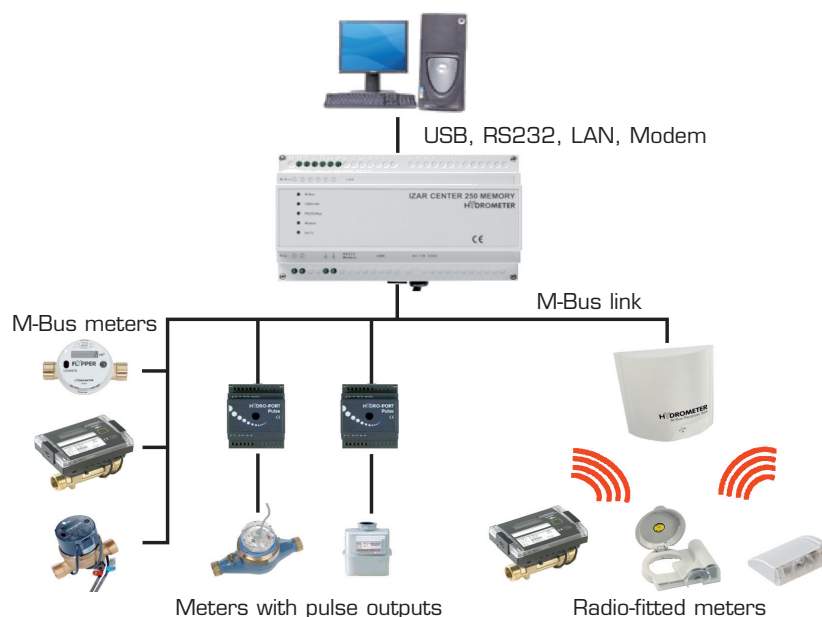
## POWER SUPPLY

IZAR-CENTER 60/120/250	Built-in 110... 230 V 50/60 Hz AC
------------------------	-----------------------------------

## ENVIRONMENT

Temperature range	from -20°C to +70°C
Humidity	up to 90%
Protection index	IP20 (complete IP55 or IP66 cabinet optional)
Approved	<b>CE</b>
Dimensions (LxWxH)	86 x 157.5 x 60 mm
Weight	Env. 500 g
Assembly	DIN 35 mm rail

## PRINCIPE



Non contractual document. Please have the features specified before ordering.

Distributed by :

If you have any questions, please do not hesitate to contact us :

**SAPPEL**

**DIEHL**  
Metering



**HEAD OFFICE** B.P. 10160 - 67 rue du Rhône - 68304 Saint-Louis Cedex - France  
Tel. +33 (0)3.89.69.54.00 - Fax +33 (0)3.89.69.72.20  
Web: www.sappel.com - E-mail: info@sappel.com

**EXPORT** B.P. 10160 - 67 rue du Rhône - 68304 Saint-Louis Cedex - France  
Tel. +33 (0)3.89.69.54.21 - Fax +33 (0)3.89.69.54.22  
E-mail: export@sappel.com