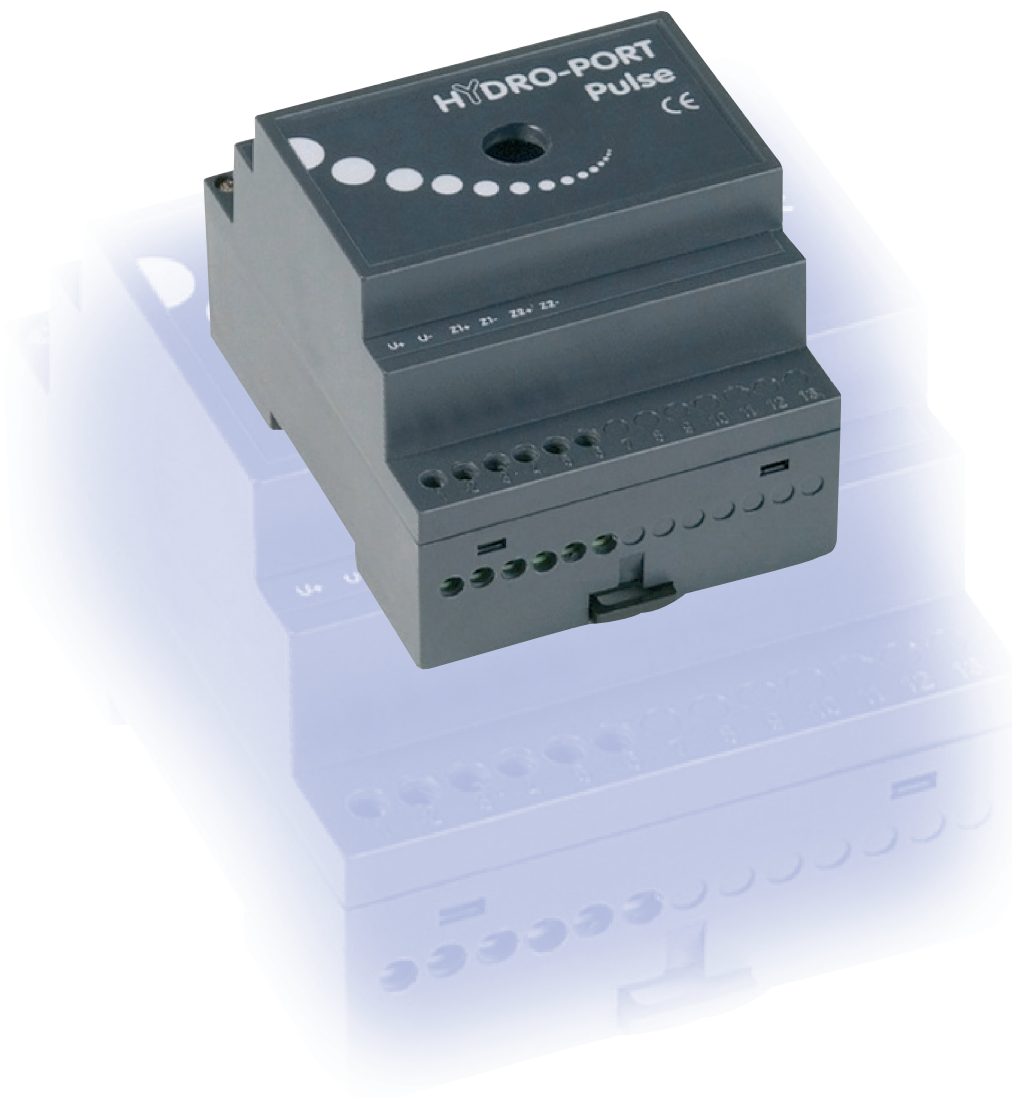


HYDRO-PORT

Pulse converter for M-Bus network

The Hydro-Port M-Bus pulse converter is a link in the Hydro-Center chain. It is used to connect one or two meters with pulse emitters (Reed type dry contact, NPN type open collector, etc.) to the M-Bus network. The two inputs may be programmed individually. Hydro-Port does not require a power supply as it is powered by the M-Bus network.



Main technical specifications

PULSE INPUTS

Two pulse inputs	Dry contact, open-collector transistor (32 V, 10 µA) Namur (24 V, 20 mA)
Min. time.	> 7,5 ms
Max. frequency.	< 50 Hz

COMMUNICATION

Speed	300 to 2400 bauds
ZVEI optical link	8 bits, even, 1 stop bit
Serial link	8 bits, even, 1 stop bit
Protocol	M-Bus

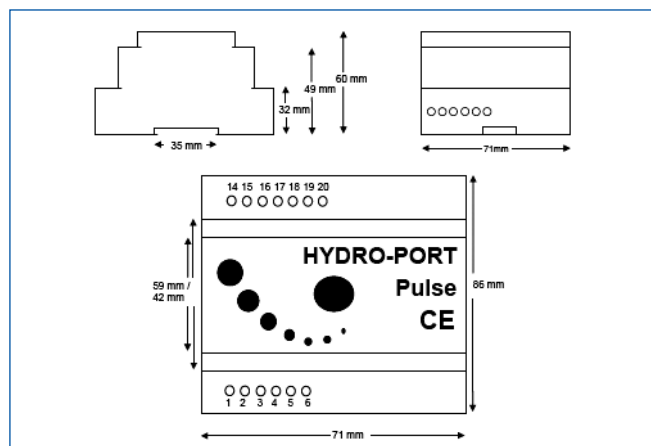
POWER SUPPLY

From M-Bus	12 - 32 V AC/DC (24 VDC nominal) max 80 mA (40 mA nominal)
------------	--

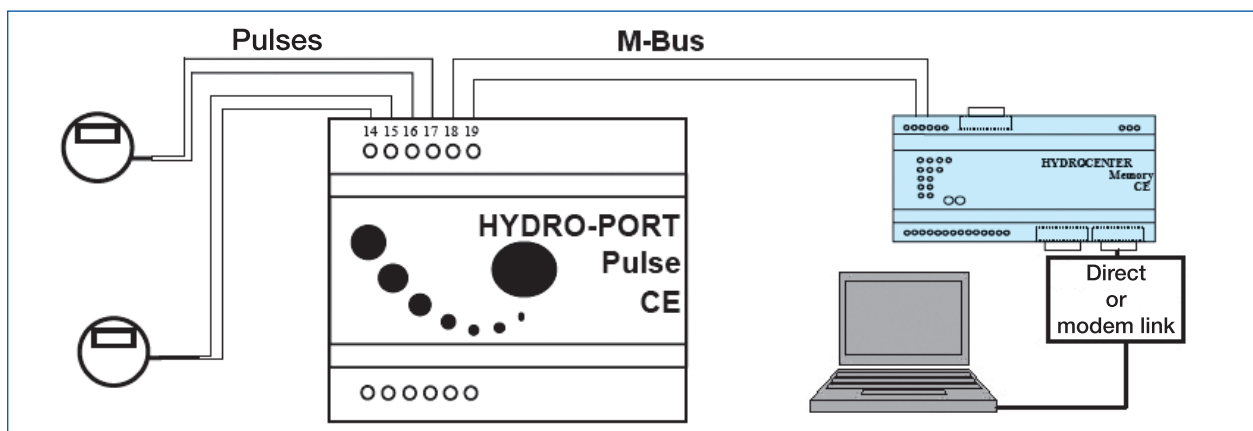
ENVIRONMENT

Temperature range	0°C to 60°C
Humidity	Up to 70%
Degree of protection	IP20
Approval	CE

DIMENSIONS



PRINCIPLE



Distributed by :

If you have any question, please do not hesitate to contact us :



HEAD OFFICE B.P. 10160 - 67 rue du Rhône - 68304 Saint-Louis Cedex - France
Tel. +33 (0)3.89.69.54.00 - Fax +33 (0)3.89.69.72.20
Web: www.sappel.com - E-mail: info@sappel.com

EXPORT B.P. 10160 - 67 rue du Rhône - 68304 Saint-Louis Cedex - France
Tel. +33 (0)3.89.69.54.21 - Fax +33 (0)3.89.69.54.22
E-mail: export@sappel.com